

BLDG 3000 PATH OF TRAVEL - LEVEL 02

BLDG 3000 LEVEL 02- PATH A	92' - 8"
BLDG 3000 LEVEL 02- PATH B	93' - 9"

DRC

PZ24-12000011

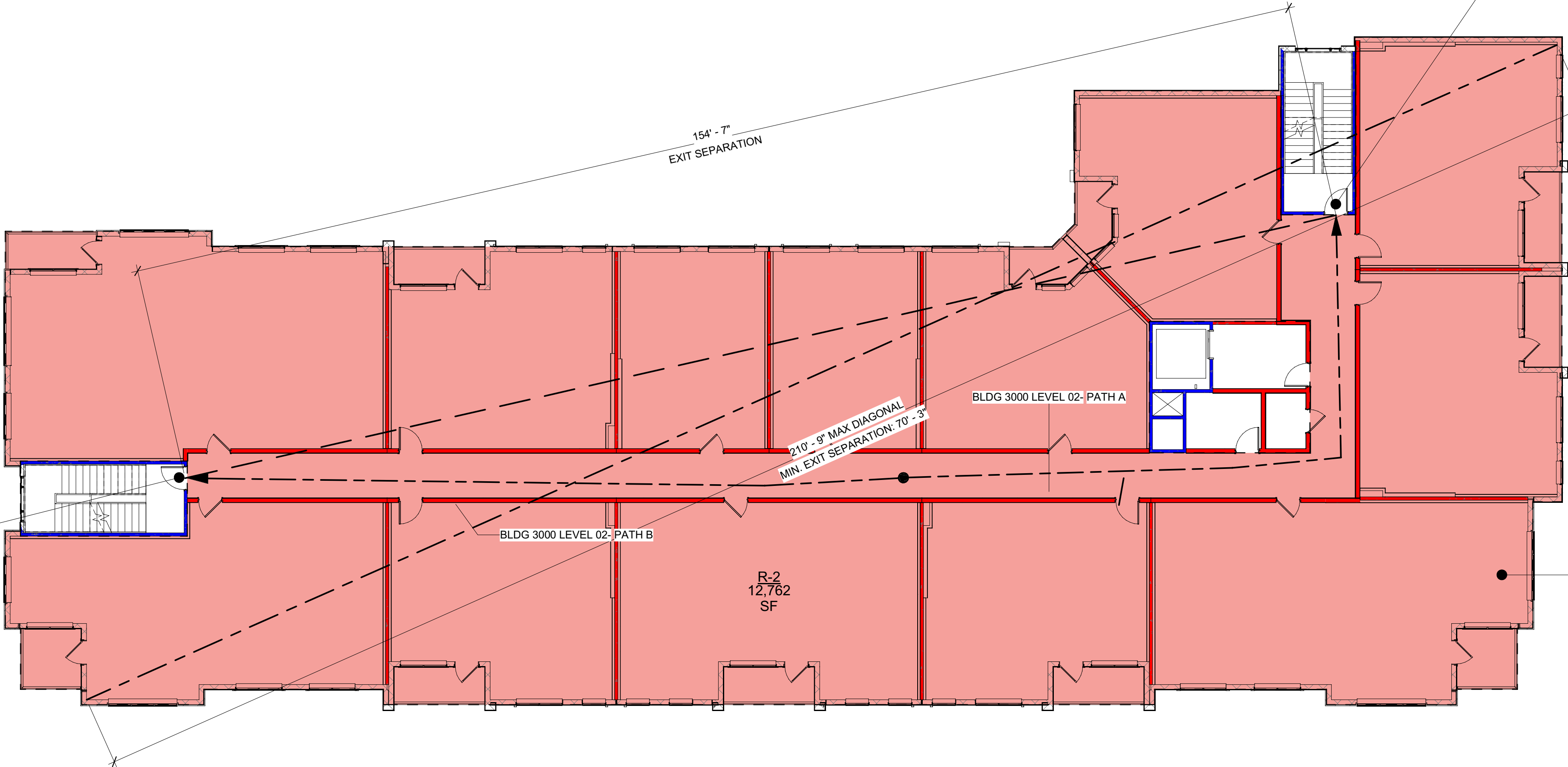
07/17/2024

DYNAMIK DESIGN

5801 PEACHTREE DUNWOODY RD.  
BUILDING C, SUITE 200  
ATLANTA, GA 30328  
TELEPHONE: 678-506-8830  
DYNAMIKDESIGN.COM

DOOR 01 & STAIR 01				TRIBUTARY OCC. LOAD 32	
	FIRE RATING	WIDTH REQUIRED	WIDTH PROVIDED	EXIT CAPACITY	EXIT DISCHARGE
DOOR	90 MIN	0.2 x 32 = 6.4"	36" (34" CLR)	170	STAIR 01
STAIR	2 HR	0.2 x 32 = 6.6"	44"	146	EXTERIOR

DOOR 02 & STAIR 02				TRIBUTARY OCC. LOAD 32	
	FIRE RATING	WIDTH REQUIRED	WIDTH PROVIDED	EXIT CAPACITY	EXIT DISCHARGE
DOOR	90 MIN	0.2 x 32 = 6.4"	36" (34" CLR)	170	STAIR 02
STAIR	2 HR	0.2 x 32 = 9.6"	44"	146	EXTERIOR



BUILDING 3000	
TOTAL AREA 12,762 SF	OCCUPANCY TYPE R-2
LOAD FACTOR 200 SF / OCC.	
OCCUPANT LOAD 64	

LIFE SAFETY SUMMARY

BUILDING 3,000		CONSTRUCTION TYPE(S):		IIB
STORIES:	05	BASEMENT:	NO	
USE GROUP(S):	R-2	GROSS AREA:	59,834 SF	
SPRINKLERS:	NFPA 13	TOTAL UNITS:	56	

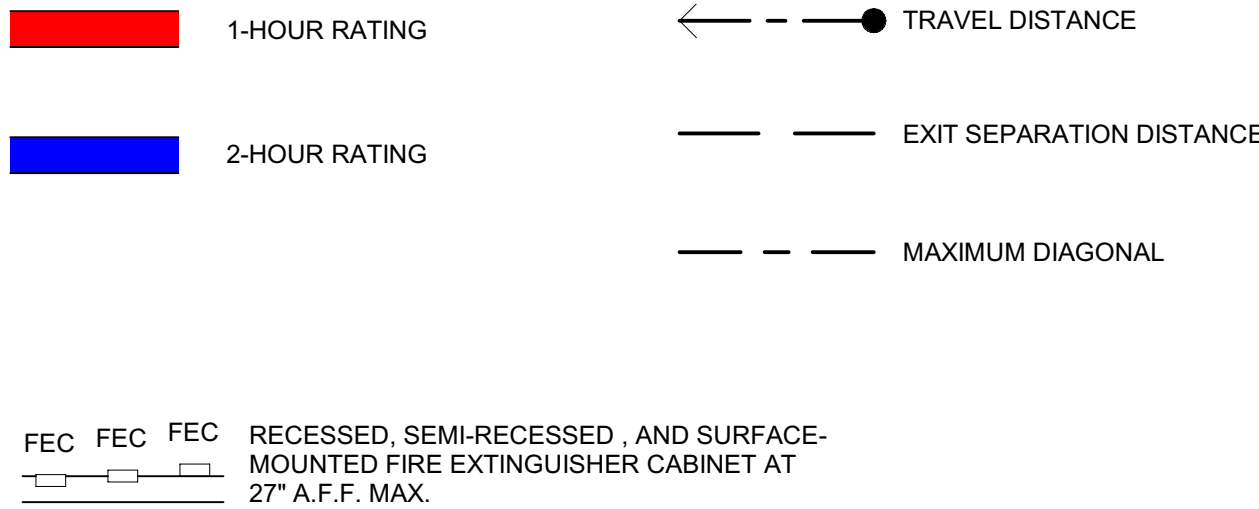
OCCUPANCY			
OCC.	AREA	LOAD FACTOR	OCC. LOAD
BUILDING 1000			
LEVEL 01			
A-3	3,189	15	213
M	2,456	60	42
R-2	12,099	200	62
S-2	1,365		4
	19,109		321
LEVEL 02			
R-2	34,381	200	172
	34,381		172
LEVEL 03			
R-2	34,363	200	172
	34,363		172

OCCUPANCY			
OCC.	AREA	LOAD FACTOR	OCC. LOAD
BUILDING 2000			
LEVEL 05			
R-2	34,370	200	172
	34,370		172
BUILDING 3000			
LEVEL 01			
A-3	454	15	31
M	3,321	60	56
R-2	2,153	200	11
S-2	773	300	3
	6,701		101
LEVEL 02			
R-2	16,583	200	83

OCCUPANCY			
OCC.	AREA	LOAD FACTOR	OCC. LOAD
LEVEL 03			
	16,583		83
R-2	16,583	200	83
	16,583		83
LEVEL 05			
R-2	16,583	200	83
	16,583		83
BUILDING 3000			
LEVEL 01			
R-2	4,598	200	23
	4,598		23
LEVEL 02			
R-2	12,762	200	64
	12,762		64
LEVEL 03			
R-2	12,765	200	64
	12,765		64
LEVEL 05			
R-2	12,765	200	64
	12,765		64

OCCUPANCY			
OCC.	AREA	LOAD FACTOR	OCC. LOAD
BUILDING 4000			
LEVEL 01			
R-2	11,729	200	59
	11,729		59
LEVEL 02			
R-2	18,301	200	92
	18,301		92
LEVEL 03			
R-2	18,280	200	92
	18,280		92
CLUBHOUSE			
LEVEL 01			
A-3	4,031	15	270
B	3,198	100	35
	7,229		305

LEGEND



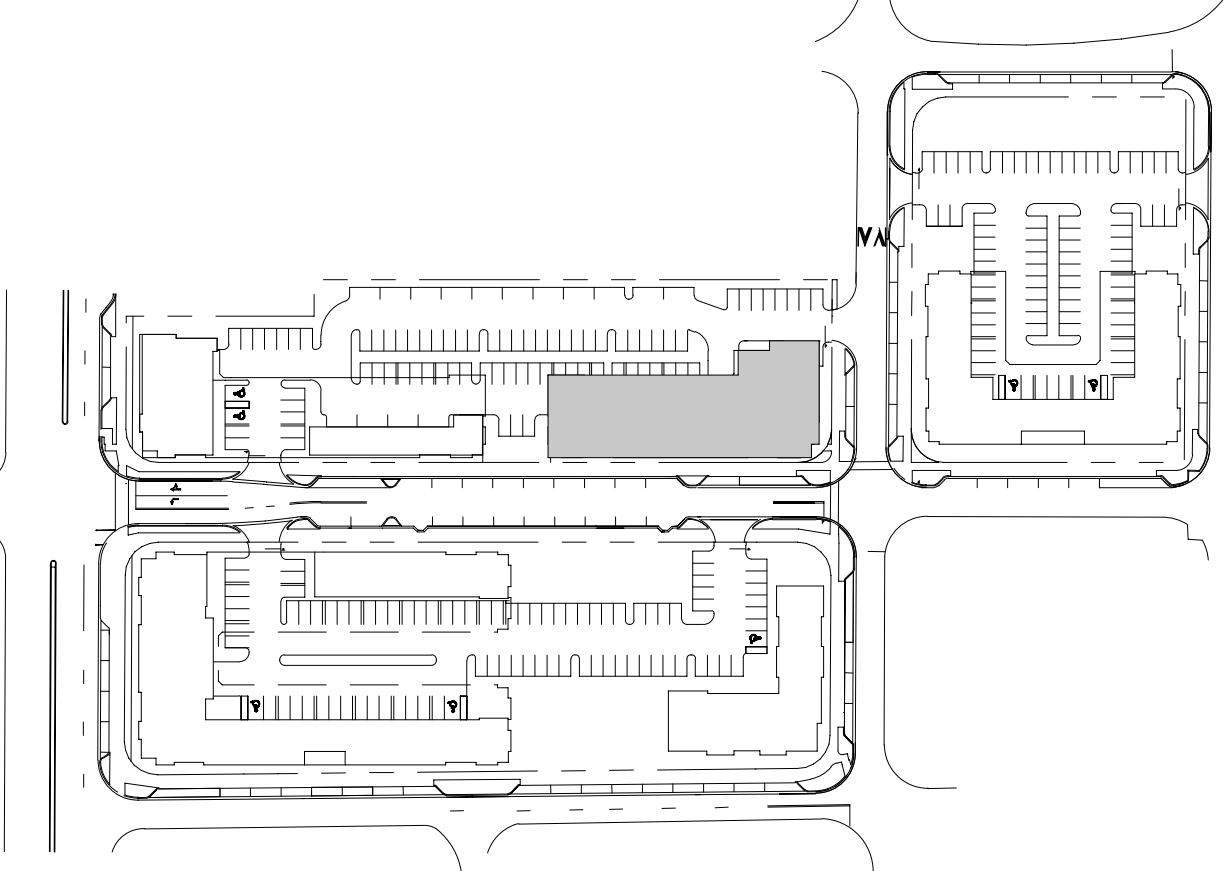
GENERAL NOTES

- SEE CODE DATA SHEET FLOOR PLANS FOR F.E.C. LOCATIONS. FIRE EXTINGUISHERS LOCATED IN PUBLIC AREAS AND BACK OF HOUSE ROOMS SHALL HAVE A MINIMUM RATING OF 10A-120B.C.
- INSTALL ONE (1) EACH 2A-10BC FIRE EXTINGUISHER UNDER KITCHEN SINK IN ALL APARTMENT UNITS.
- PER TABLE 508.4 OF THE 2023 FBC, 1 HOUR OCCUPANCY SEPARATION IS REQUIRED BETWEEN RESIDENTIAL ASSEMBLY, AND BUSINESS OCCUPANCIES. RESIDENTIAL BUILDING TO BE EQUIPPED WITH AN AUTOMATIC SPRINKLER SYSTEM IN ACCORDANCE WITH SECTION 903.3.1.1 OF THE 2023 FBC.
- FIRE SPRINKLER DESIGNER TO CONFIRM LOCATION AND QUANTITY OF FIRE HOSE CABINETS AT HORIZONTAL EXITS/FIREWALLS.

1 BUILDING 3000 LEVEL 02

SCALE: 3/32" = 1'-0"

KEY PLAN



CONSULTANT:

Seal of David Yung, Professional Engineer, State of Florida, No. 12591, Exp. 06/11/2024

Digitally Signed by David Yung  
Date: 2024.06.18 17:59:15 -0400

SEAL:

1726 E ATLANTIC BLVD  
POMPANO BEACH, FL 33060

PROJECT NUMBER: CLR2023-03  
ATLANTIC ONE

220 MAIN ST  
GAINESVILLE, FL 32601

CLIENT:

THE COLLIER COMPANIES

△	DRAWING RELEASE	DATE
DRC		06/11/2024

TITLE:  
BUILDING 3000  
LEVEL 02 CODE  
DATA - LIFE  
SAFETY PLAN

SHEET NUMBER:

CD-10